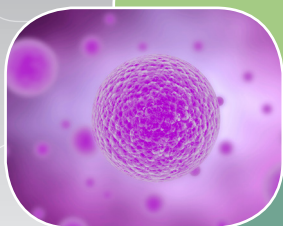


Evidence Drying Cabinet



Horizontal Evidence Drying Cabinet



Vertical Evidence Drying Cabinet

Introduction

Esco Evidence Drying Cabinet is a negative pressure cabinet designed to provide security, tamper proof, and prevent loss of integrity and credibility and possible cross-contamination of evidence and impede any harmful airborne pathogens, putrid odors, and other gases from escape that may harm or infect employees/technicians.

Construction

- Cabinet exterior is constructed of industrial-grade electrogalvanized steel with mobile lockable casters.
- Esco **ISOCIDE**™ antimicrobial coated cabinet structure prevents surface contamination and inhibits bacterial growth on the cabinet's external surface.
- Stainless steel interior for easy cleaning.
- Built-in warm white, electronically ballasted, 5000k lighting provides excellent illumination of the work zone and reduces operator fatigue. The reliable lighting system is a zero-flicker and instant start.
- Stainless steel collapsible wire mesh shelves.
- Laminated Tempered Glass Door to prevent UV light exposure.
- Stainless steel catch tank underneath the drying cabinet with hose provision.

Filtration System

The enhanced filtration system on Esco Evidence Drying Cabinet is designed to provide the highest level of operator protection from harmful exposure to biohazards, putrid odours, and gases emanating from evidence materials.

- Disposable and non-washable polyester fibers with 85% arrestance below the door entry and before the ULPA Filter.
- High quality ULPA filters utilizing an improved mini-pleated separation technique to maximize surface area which improves efficiency and extends the filter life. Filters operate at a typical efficiency of >99.999% at 0.1 to 0.3 micron sizes.
- Carbon filtration to remove putrid odours and gases.

Control System

Esco Evidence Drying Cabinet is controlled by Sentinel Control System with the following features;

- Timer for evidence drying cycle.
- Programmable UV switch and timer which turns off automatically after a fixed period.
- UV lifespan countdown timer.
- Velocity and exhaust temperature display.
- Blower Hour meter indicates how long the blower has been in operation.
- Visual and audible alarms.
- Two speed automatic blower setting pre-set to half speed and 100% blower speed.

Blower System

- Energy-efficient external rotor motor design reduces operating costs and has extremely low noise and vibration levels.
- The intelligent blower system maintains airflow as the filter becomes loaded, ensuring optimum efficiency and product protection.
- Built-in solid state variable speed controllers, with integral RFI and noise filters, are superior to conventional "step" controllers and offer infinite adjustment from zero to maximum setting.

Airflow

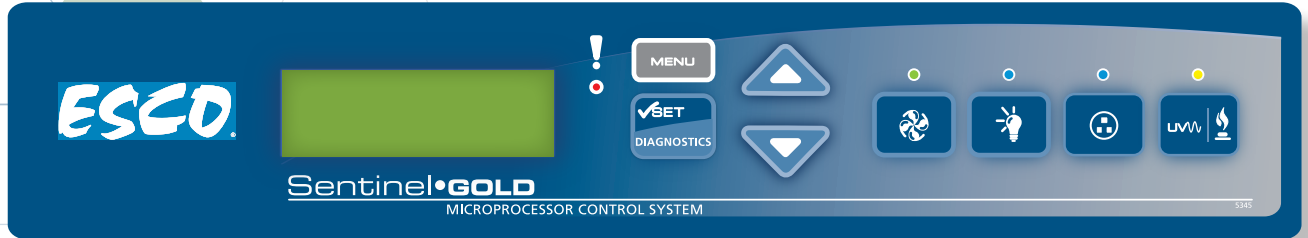
- During operation, room air is drawn through the door of the cabinet via a non-washable polyurethane pre-filter with 85% arrestance, trapping particulates and prevent cross-contamination of the evidence materials.
- The air is then forced inwards resulting in a unidirectional stream of air projected vertically upward over the internal work zone by the blower system found on top of the cabinet. All airborne contaminants and putrid odours from materials inside the cabinet are pushed up towards a three stage filtration consisting of Pre-filter, ULPA, and carbon filters.

- Contaminated air from the cabinet exhaust through a combination of ULPA and carbon filters and recirculated back into the room/environment
- A nominal filter face velocity of 0.45 m/s (90 fpm) ensures that there is a sufficient number of air changes within the enclosed area of the cabinet in order to maintain cleanliness.
- Disposable and non-washable polyester fibers with 85% arrestance below the door entry and before the ULPA Filter.

Warranty

The one-year warranty will cover all the other parts including the blower, speed controller, electrical main board, and microprocessor, excluding consumables such as the ballast, fluorescent, and filters. During the warranty period, no repairs, modifications, testing and commissioning will be performed by any unauthorized party other than the Esco Service Team or the warranty shall be deemed voided.

Evidence Drying Cabinet Sentinel™ Gold Microprocessor Control System



- Displays all safety information on one screen
- Centered and angled down for easy reach & viewing
- Selectable Quickstart mode for fast operation

2

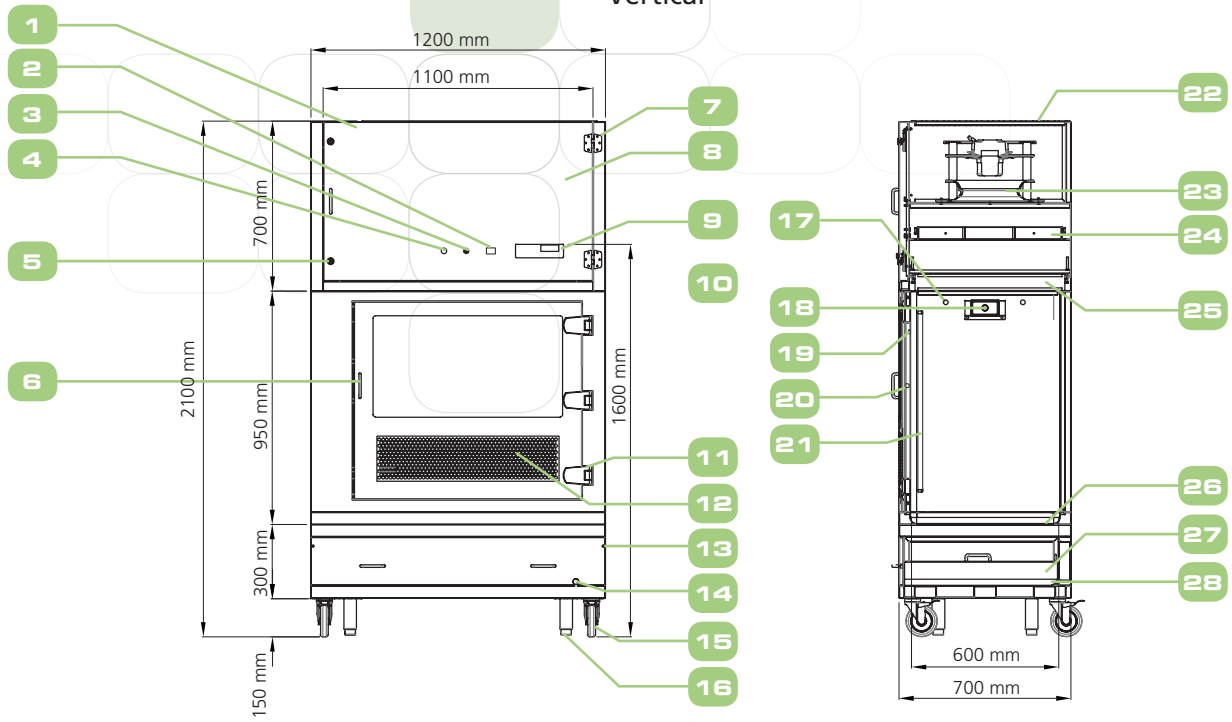
GENERAL SPECIFICATION		
Modelz	Esco Evidence Drying Cabinet	
Nominal Size	1.2 m (47.2")	
External Dimension (W x D x H)	1200 x 700 x 2300 mm (47.2" x 27.6" x 90.6")	
Internal Work Area Dimension (W x D x H)	1100 x 600 x 1160 mm (43.3" x 23.6" x 45.7")	
Exhaust Volume Face Velocity of 0.45 m/s	900 cmh (1530 cfm)	
Cabinet Construction	Main Body	Electrogalvanized Steel Powder Coated
	Floor	Stainless Steel Grade 304
	Door	Glass Door with Electrogalvanized Steel Frame
Power Consumption	2200 W	
Cabinet Full Load Amps (FLA)	10 A	
Electrical	220 - 240 VAC 50 / 60HZ	
Controller	Sentinel™ Gold Microprocessor Control System	
Net Weight	230 kg (506 lbs)	
Shipping Weight	250 kg (550 lbs)	
Shipping Dimension, Maximum (W x D x H)	2300 x 960 x 1400 mm (90.6" x 37.8" x 55.1")	

OPTIONS		
Inbuilt pump to drain	Inflatable sealed IP66 door with automated spray down.	
UV-C lighting	Stainles steel storage box	
Clean In Place (CIP) Spray gun	Hanging evidence segregator	
Wash In Place (WIP) Spray ball		

GUIDE TO ESCO EVIDENCE DRYING CABINET MODELS												
EDHC - 4 G B - C 8												
Model	AIRFLOW DIRECTION	CODE	SIZE	CODE	DOOR SEAL	CODE	PUMP	CODE	CLEANING METHOD	CODE	VOLTAGE	CODE
EDHC / EDVC	Horizontal	H	4 FT	4	Gasket	G	None	N	None	N	220-240 VAC, 50/60 Hz	8
	Vertical	V	6 FT	6	IP 66	I	Inbuilt	B	CIP	C	110-120 VAC, 50/60 Hz	9
									WIP	W		
									Dual	D		

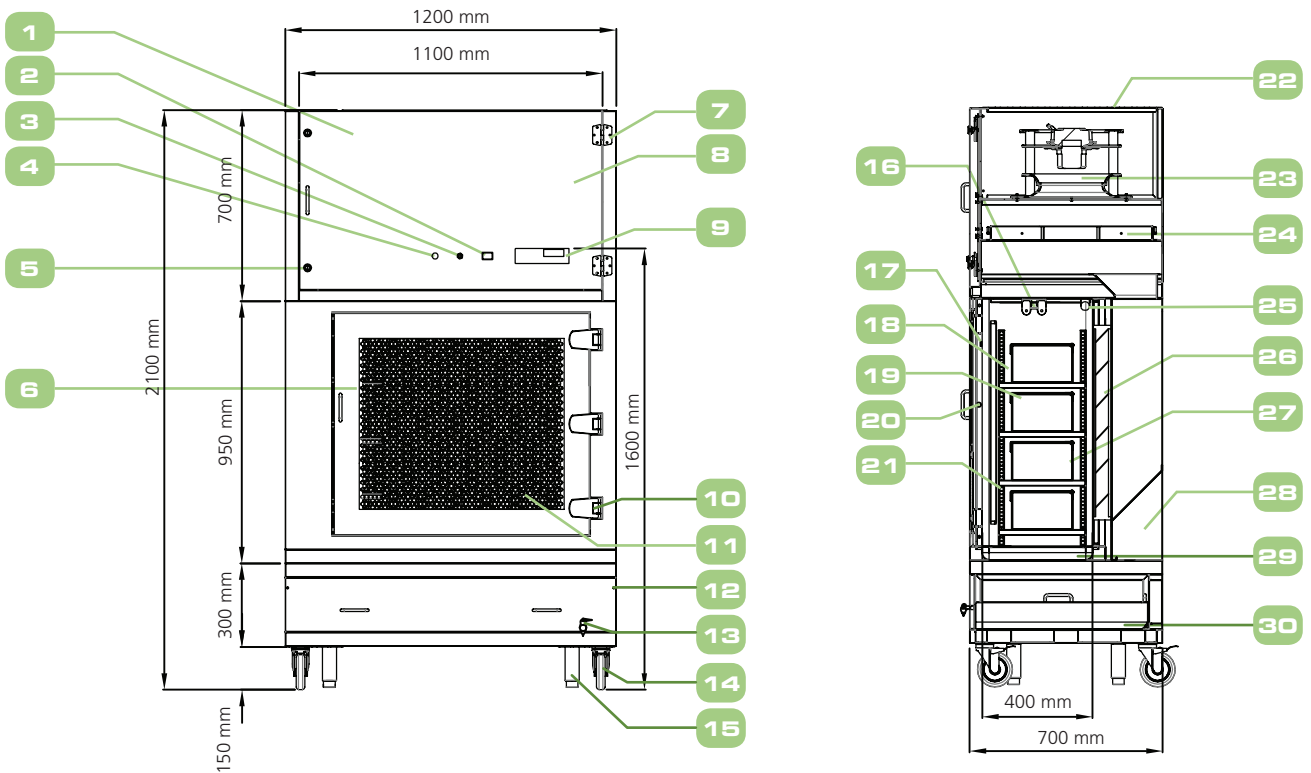
Evidence Drying Cabinet Construction

Vertical



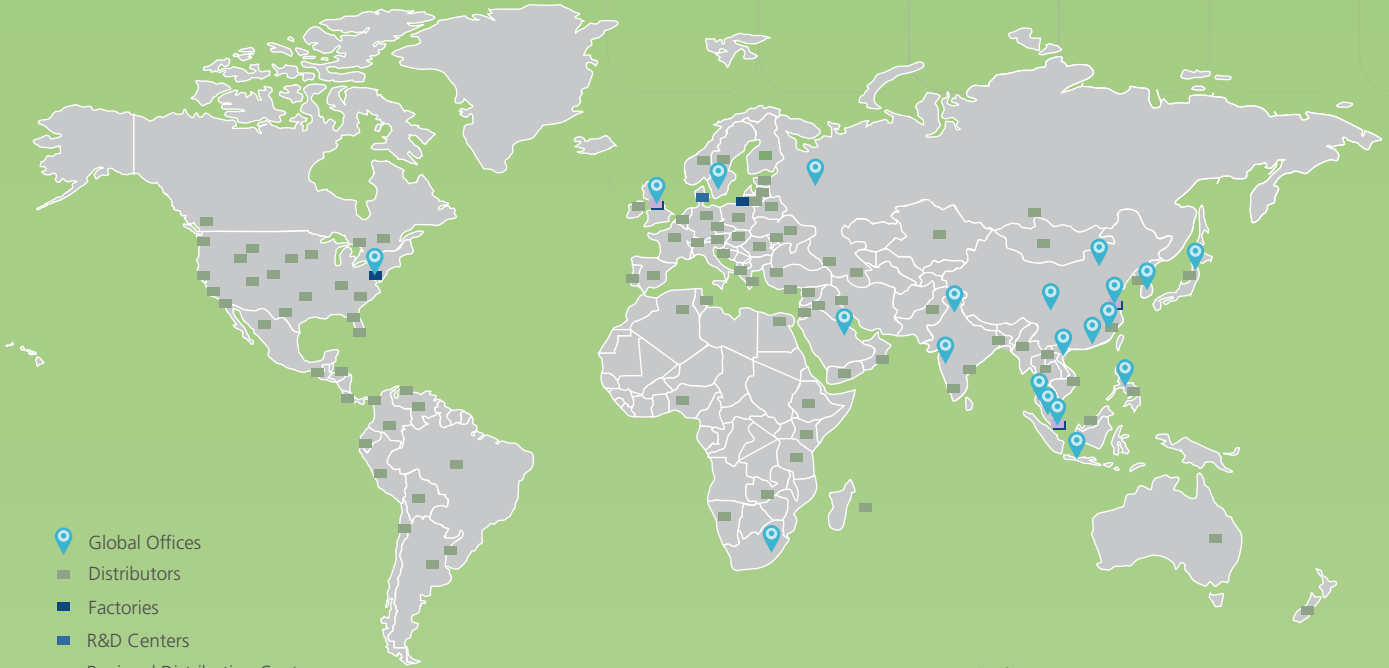
- | | | | | |
|---------------------------|--|---------------------------------|------------------------|--|
| 1. Electrical Panel | 7. Plastic Hinge | 12. Air Inlet/Pre-filter | 18. SS304 Rod | 24. Carbon Filter |
| 2. UV HR-Meter Display | 8. Filter and Fan Plenum | 13. Thumb Screw | 19. IV-Magnetic Switch | 25. HEPA Filter (H14) |
| 3. Visual Alarm | 9. Sentinel™ Gold | 14. Drain Line Faucet | 20. Door Ball Latch | 26. SS304 Coved Corner Chamber Base with Drain |
| 4. PMP Test Port | 10. Laminated Tempered Glass with UV Light | 15. Cleanroom Wheels (Lockable) | 21. UV Light | 27. Drain Pan |
| 5. Cam Latch | 11. SS304 | 16. Leveling Feet | 22. G4 Exhaust Filter | 28. SS304 Coved Corner |
| 6. Stainless Steel Handle | | | 23. Fan Blower | |

Horizontal



- | | | | |
|---------------------------|---------------------------------|--|--|
| 1. Electrical Panel | 10. SS304 | 19. SS304 Shelve (Non Perforated) Adjustable | 27. 300 x 150 x 140 mm SS Compartment |
| 2. UV HR-Meter Display | 11. Air Inlet/Pre-filter | 20. Door Ball Latch | 28. Rear Air Plenum |
| 3. Visual Alarm | 12. Thumb Screw | 21. Pilaster Bracket | 29. SS304 Coved Corner Chamber Base with Drain |
| 4. PMP Test Port | 13. Drain Line Faucet | 22. G4 Exhaust Filter | 30. SS304 Coved corner |
| 5. Cam Latch | 14. Cleanroom Wheels (Lockable) | 23. Fan Blower | |
| 6. Stainless Steel Handle | 15. Leveling Feet | 24. Carbon Filter | |
| 7. Plastic Hinge | 16. LED Lighting | 25. UV Lighting | |
| 8. Filter and Fan Plenum | 17. LED Lighting | 26. HEPA Filter (H14) | |
| 9. Sentinel™ Gold | 18. Glass View | | |

ESCO GLOBAL NETWORK



-  Global Offices
-  Distributors
-  Factories
-  R&D Centers
-  Regional Distribution Centers



- Air Shower
- Aseptic Containment Isolator (ACTI)
- Ceiling Laminar Airflow Units
- Cleanroom Transfer Hatch
- Containment Barrier Isolator (CBI)
- Downflow Booth (DFB)
- Dynamic Floor Label Hatch
- Dynamic Pass Box
- Evidence Drying Cabinet
- Garment Storage Cabinet
- General Processing Platform Isolator (GPPI)
- Laminar Flow Horizontal Trolley
- Laminar Flow Straddle Units, Single and Double Laminar Flow Vertical Trolley
- Pass Box
- Soft Wall Cleanroom
- Sputum Booth
- Ventilated Balance Enclosure (VBE)
- Weighing and Dispensing Containment Isolator (WDCI)

Since 1978, Esco has emerged as a leader in the development of controlled environment, laboratory and pharmaceutical equipment solutions. Products sold in more than 100 countries include biological safety cabinets, fume hoods, ductless fume hoods, laminar flow clean benches, animal containment workstations, cytotoxic cabinets, hospital pharmacy isolators, and PCR cabinets and instrumentation. With the most extensive product line in the industry, Esco has passed more tests, in more languages, for more certifications, throughout more countries than any biosafety cabinet manufacturer in the world. Esco remains dedicated to delivering innovative solutions for the clinical, life science, research and industrial laboratory community. www.escoglobal.com.

ESCO PHARMA[®] PLATFORM SPECIALIST.

Esco Pharma Pte Ltd
 21 Changi South Street 1 Singapore 486777 • Tel: +65 65420833
 Fax: +65 65426920 • Email: csis.pharma@escoglobal.com

Esco Technologies, Inc.
 2512 Metropolitan Drive, Suite 120 B
 Feasterville Trevose, PA 19053-6738
 Tel: 215 322 2155 • Email: eti.pharma@escoglobal.com

Esco Gb Ltd
 Unit 9, Century Park Networkcentre, Dearne Lane,
 Manvers, Rotherham, South Yorkshire, S63 5DE.
 Tel: +44 (0) 1709 761 669 • Email: egb.info@escoglobal.com

Esco Global Offices: Bahrain | Bangladesh | China | India | Indonesia | Italy | Japan | Malaysia
 Philippines | Russia | Singapore | South Africa | South Korea | Thailand | United Kingdom | USA
 Vietnam

Evidence Drying Cabinet, Cabinet, Cabinet, A.S., Sept2015
 Esco reserves the right to alter its products and specifications without notice. All trademarks and logos in this material
 are the property of Esco and the respective companies.

